



ARISE CAPITAL

Investment Consultants LLC



Disclaimer

This document has been prepared by Arise Capital Investment Consultants LLC (“Arise”) for discussion and/or information purposes only and does not constitute either an offer or the solicitation of an offer to enter into securities or any other transaction. This document is an indicative summary of various strategies based on our research and analysis. It is not intended to set forth a final expression of the future performance of the strategy and it may be amended, superseded or replaced in its entirety, or part by subsequent strategies and governing parameters and should not be relied on. Should a transaction ultimately be entered into between us, the final terms and conditions of the transaction will be set out in full in a binding transaction document and reference should be made only to such document and not this indicative document for definitive information. This document shall not constitute (including but not limited to) an undertaking, advice, an offer to sell, or the solicitation of an offer to buy any securities, products, commodities or other instruments, or a recommendation to enter into any transaction by Arise. Nor is it an official or unofficial confirmation of terms. Although the indicative historical performance set forth herein is reflective of past events, as of the date of this communication, under which we believe an issuance of securities or other transactions might be structured, no assurance can be given that such an issuance or transaction could in fact be executed, nor is any entity obligated to issue such securities or obligations or enter into any transaction, nor can it be relied upon as a guide for future performance. To the extent that you subsequently enter into a transaction with Arise and/or any of its affiliates this would be on the basis that you were transacting with us as principal (and not as agent or in any other capacity, fiduciary or otherwise) and no other person would have an interest herein. All information, terms and pricing set forth herein is indicative and subject to change without notice and without any obligation on us to inform the same. Any opinions expressed herein reflect our judgment at the date and time hereof and are subject to change without notice and without any obligation on us to inform the same. The information contained in this document has been internally developed or taken from trade and statistical services and other sources which we deem reliable, but no warranty is made that such information is accurate or complete and it should not be relied upon as such.

Transactions of the type described herein may involve a high degree of risk and the value of such investments may be highly volatile. Such risks may include without limitation risk of adverse or unanticipated market developments, risk of insufficiency and risk of illiquidity. In certain transactions counterparties may lose their entire investment or incur an unlimited loss. Any reliance on this document is at your own risk and we shall not be held responsible or accountable for any risks, losses or damages, arising from reliance on this document voluntarily and contrary to our advice of non-reliance herein.

These strategies are not available to Retail Investors and can only be entered into by Qualified and Institutional investors. This requires the completion of certain documentation, along with Definitive Agreements for an investment and finally certain “Know Your Customer” information required within jurisdiction. Should you require any further information regarding these requirements please contact an authorized representative of Arise.

Arise Capital Investment Consultants LLC

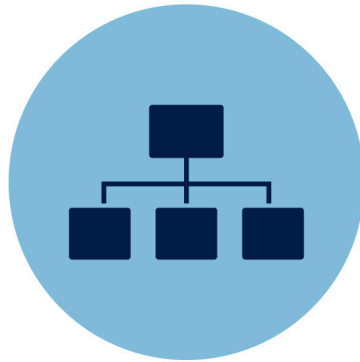
Arise Capital Investment Consultants LLC (“Arise”) is a United Arab Emirates incorporated entity who is doing research & analysis on various financial strategies that seek alpha returns. Examples of some of these strategies include using algorithms to run on large, liquid, listed asset classes such as ETFs, US Treasuries, currencies or equities. Arise works with a series of Global Brokers to ensure that the investment strategies are executed in a controlled manner, and where appropriate, operational risks are mitigated by the infrastructure of these large organizations. It seeks to partner with them so that they can bring the best of their expertise to the programme, yet benefit from the Arise financial structures and algorithms.

Our Services



Investment Consultancy

Guidance on financial planning, investments, and strategies to achieve financial goals.



Portfolio Management

Managing and optimizing investment portfolios to maximize returns and minimize risks.



Strategic Planning

Developing long-term business strategies to achieve organizational goals.



Project Financing

Securing funding for specific business projects or ventures.

Our Services



Investment in US Share Market

Investing in publicly traded U.S. companies on leverage.



Banking & CFO Services

Financial management, advisory, and banking solutions for businesses, including multi-currency bank account in leading international Digital bank.



Company Formation

Assisting for Company formation in UAE and oversea countries like Oman, Singapore, China, Malaysia, Cayman Islands, British Virgin Islands, Bermuda, Panama, Switzerland.



Trading of Indian Unlisted Shares

Buying and selling shares of Indian companies not listed on stock exchanges.

Online Trading Platform

We are Referral Partner of CENTURY FINANCIAL CONSULTANCY LLC, who is a regulated financial broker registered in Dubai and duly licensed and regulated by the Securities and Commodities Authority of UAE ('SCA')

We are offering online trading platforms where investors can trade financial instruments including Securities, Equities, Commodities, Indices, Currencies, Crypto, Futures.

CENTURY
FINANCIAL

Products	Description	Leverage
Equities	Shares of USA, UK, Europe, Sweden, Norway, Switzerland, Hongkong, Denmark	1 : 10 Max
Indices	USA, Europe, UK, Global, Sweden, Japan, Hongkong, France, Germany, Canada, China, Italy, South Africa, Norway, Australia, Spain.	1 : 100 Max
Commodities	Gold, Silver, Oil, Cocoa, Natural Gas, Coffee, Copper, Cotton, Gasoline, Gasoil, Heating Oil, Orange Juice, Palladium, Platinum, Rice, Soybean, Sugar, Wheat etc. Some commodities are available in FUTURES as well.	1 : 100 Max
Currencies	All Major & Minor currencies are available including USD, Euro, GBP, JPY, AUD, CAD, CHF, CNH, HKD, MXN, NZD, TRY, ZAR.	1 : 100 Max
ETF	Exchange Traded Funds & Treasury Bonds issued by leading International Exchange	1 : 200 Max
Crypto	Bitcoin, Cardano, Chainlink, Dash, Dogecoin, Ethereum, EOS, Litecoin, Polygon, Solana, Stellar, Tron	1 : 5 Max

Important Notes

Minimum Investment Amount

\$10,000

Capital withdrawal

Fund withdrawal are immediate and investor will get credit within 24 hours.

Insurance

Comprehensive insurance coverage of up to **US\$2 Million per client**, in the unlikely scenario that Century become insolvent.

Address

6th Floor, Emaar Square Building 4,
Downtown, P.O. Box 65777, Dubai,
United Arab Emirates

Website

www.century.ae

Structured Finance Solutions

- Commercial Property Finance
- Vessel Finance
- Heavy Equipment Finance

OTHER FEATURES :

- Higher LTV upto 80%
- Tenor : up to 60 EMI
- Processing Time: One Month
- Flexible on age of vessel: 15+ years are acceptable



Contact Us

UAE

Arise Capital Investment
Consultants LLC
307, Opal Tower, Business Bay,
Dubai, UAE

Phone: +97156-6209149

Email: info@arisecapinvest.com

Website: www.arisecapinvest.com

LinkedIn & Facebook

Arise Capital Investment
Consultants LLC

INDIA

Kamtech Associates Pvt. Ltd.
IT-23, IT Park, Sitapura Industrial
Area, Jaipur -302022 (INDIA)

Email: info@kamtech.in

Website: www.kamtech.in

Capital Investment Research Division
No. 3, 1st Main Road, Netaji Nagar,
Kempapura Hebbal,
Bengaluru -560024 (INDIA)

Email: research@arisecapinvest.com

GERMANY

Fluc GmbH
Gutenbergstr, 77a 70197
Stuttgart, Germany

Email: info@fluc.eu

Website: www.fluc.eu



ARISE CAPITAL

Investment Consultants LLC

Thank You